



**VET**  
**dermcare**  
THE SPECIALISTS IN SKIN CARE



# PYOHEX<sup>®</sup>

30 g/L Chlorhexidine gluconate

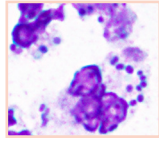
An aid in the treatment of superficial dermatitis associated with infections by *Staphylococcus pseudintermedius* in dogs.



# Superficial Bacterial Pyoderma

# Pyohex<sup>®</sup> Medicated Range

Superficial bacterial pyoderma is associated with the superficial layer of the skin and the hair follicle. The most common bacteria involved in dogs is *Staphylococcus pseudintermedius*. It is normal to have low numbers of bacteria on the skin, however, overgrowth can cause disease.



Intracellular *Staphylococcus pseudintermedius*.

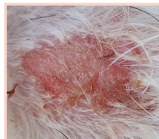
## What causes superficial dermatitis?

Infections occur secondary to underlying conditions including:

- Endocrine disorders, such as hypothyroidism and Cushing's disease.
- Allergies, including environmental, food, contact and flea allergy.
- Parasites, such as fleas, mites and lice.

## Clinical signs

- Pustules →
- Skin redness and inflammation
- Hair loss
- Scaling and crusting
- Hot spots →



## Did you know?

Pyohex<sup>®</sup> Medicated Shampoo contains the active ingredient, chlorhexidine, at an optimal concentration to provide antibacterial action against *Staphylococcus pseudintermedius*. This antibacterial action may be extended by using Pyohex<sup>®</sup> Medicated Conditioner after Pyohex<sup>®</sup> Medicated Shampoo.

Pyohex<sup>®</sup> Medicated Shampoo and Conditioner kill bacteria that cause superficial bacterial pyoderma in dogs. They can be used on both haired and non haired areas.

Bathing helps to remove debris including scale, crust and sebum, as well as any environmental allergens that may be contributing to the skin disease.

## How do I use Pyohex<sup>®</sup> Medicated Shampoo?

- Wet your dog thoroughly with water.
- Apply Pyohex<sup>®</sup> Medicated Shampoo to several points and massage into the coat. Ensure that affected areas have contact with the shampoo.
- A sponge may assist lathering and penetration into the coat.
- Leave on the coat for 10 minutes to allow contact time with the shampoo. Give your pet a treat or a toy to play with to pass the time. Ensure your pet is supervised during this time to avoid ingestion or inhalation of the shampoo.
- Rinse off with clean water.
- Towel dry to remove excess water before applying Pyohex<sup>®</sup> Medicated Conditioner to a damp coat.

## Pyohex<sup>®</sup> Medicated Conditioner

Applying Pyohex<sup>®</sup> Medicated Conditioner to a damp coat after bathing has many benefits:

- Prolongs the antibacterial action of chlorhexidine containing shampoos such as Malaseb<sup>®</sup> and Pyohex<sup>®</sup>.
- Aids in preventing the recurrence of skin infections.
- Improves coat softness.
- Moisturises the skin.
- Is non-greasy, may be applied to haired skin and does not attract dirt to the coat.





**VET**  
**dermcare**  
THE SPECIALISTS IN SKIN CARE



Dermcare-Vet  
7 Centenary Road  
Slacks Creek, QLD, 4127  
07 3387 9700  
[www.dermcare.com.au](http://www.dermcare.com.au)

Scan the QR code for a video demonstration



Please follow your veterinarians treatment instructions: \_\_\_\_\_

\_\_\_\_\_

\_\_\_\_\_

\_\_\_\_\_

\_\_\_\_\_